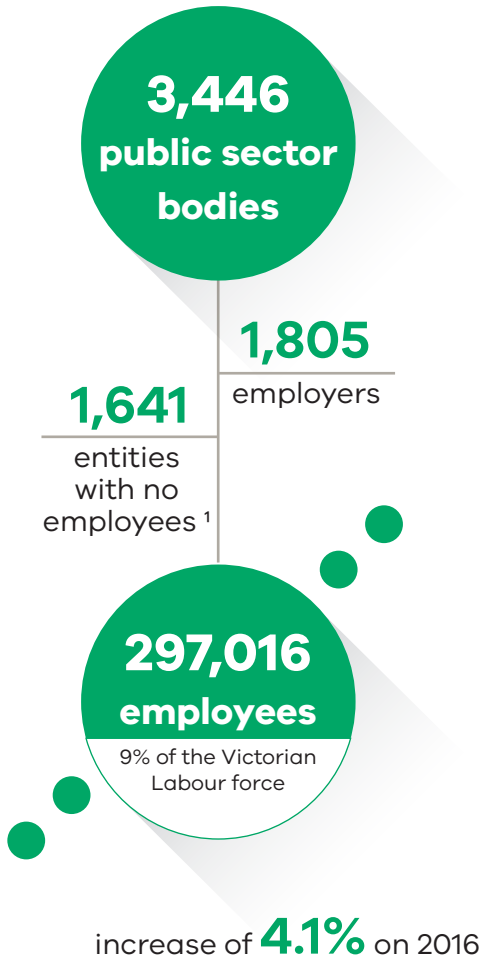


THE VICTORIAN PUBLIC SECTOR

2016-2017 BY THE NUMBERS



Employees
198,866
FTE

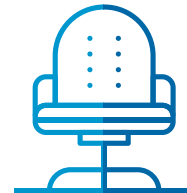
PUBLIC ENTITY



Executives
1,237
0.5% of entity
employees

Employees
40,107
FTE

PUBLIC SERVICE



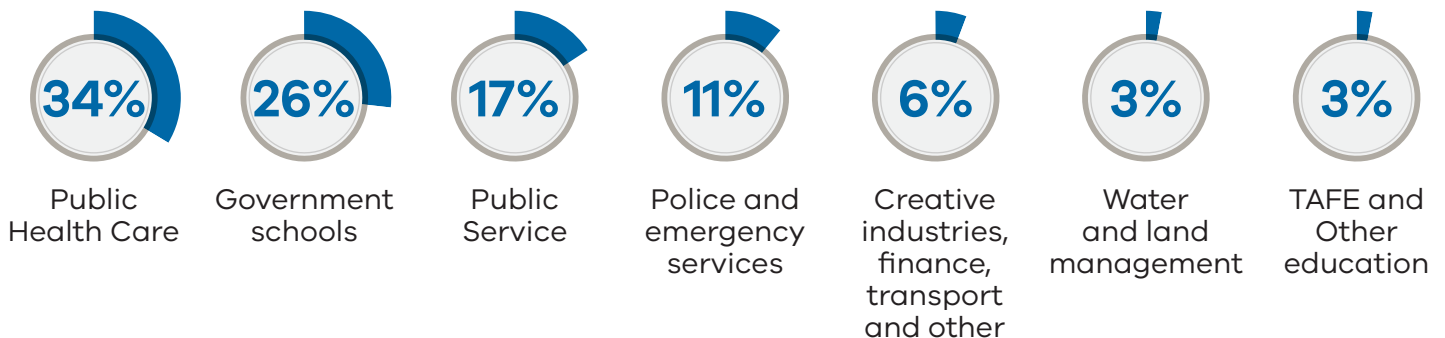
Executives
853
2.0% of service
employees

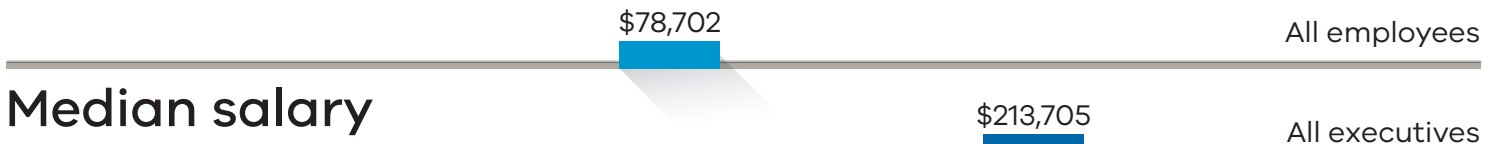
Total Employees
238,972
FTE



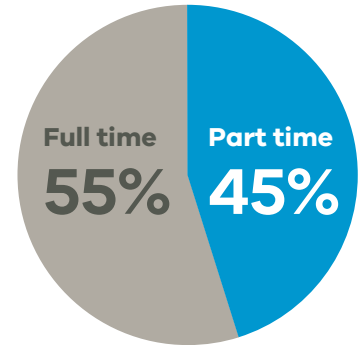
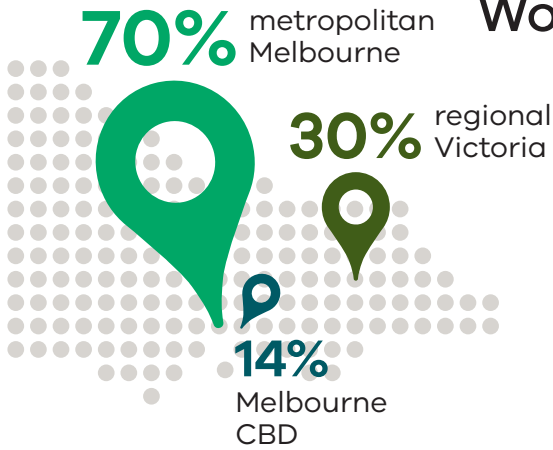
Total Executives
2,090
0.7% of all sector
employees

Distribution of FTE Employees by Industry

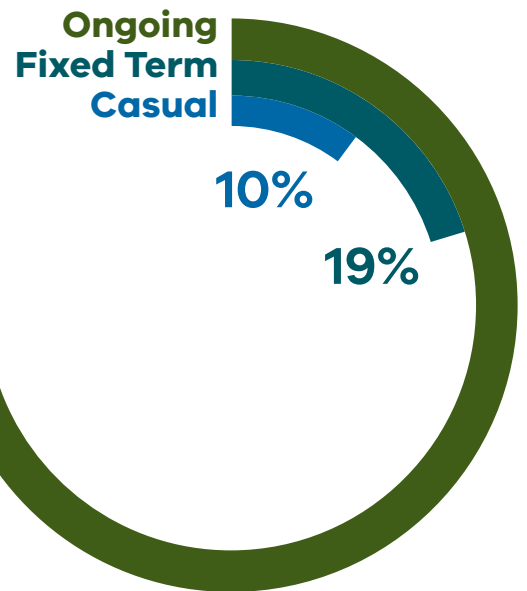




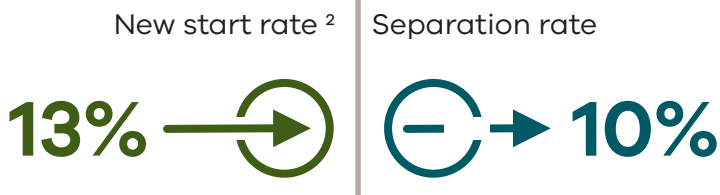
Work location



Employment Status



Non-casual employees turnover

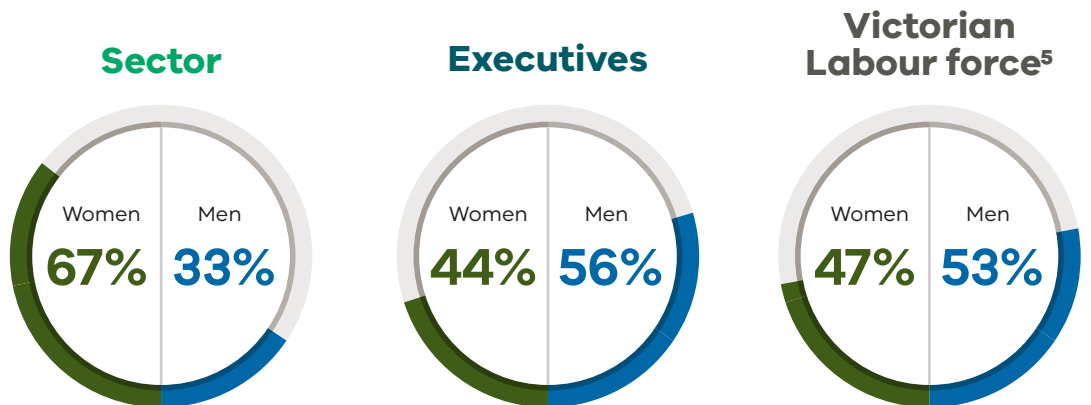


Education



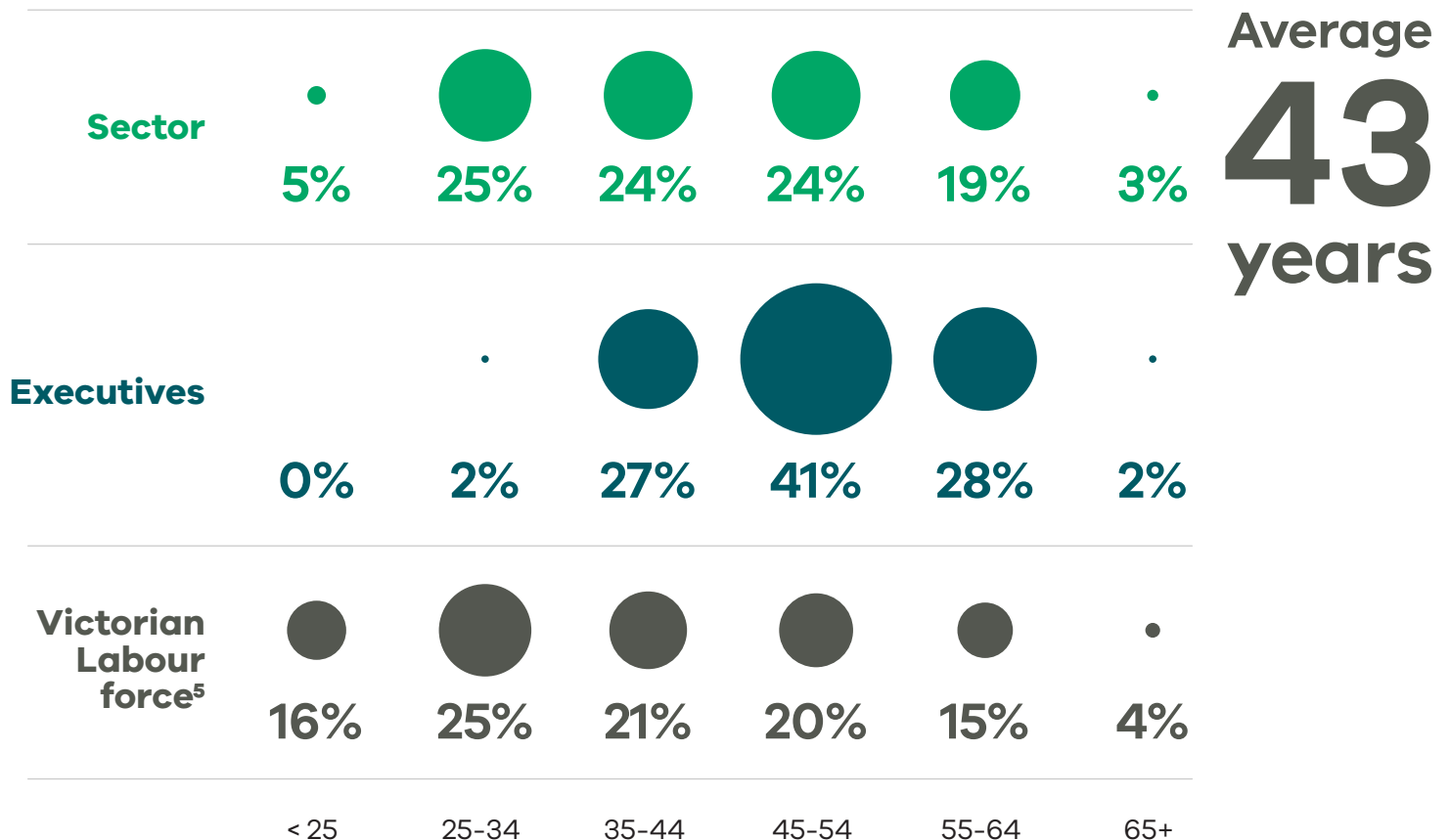
Workforce age and gender

Gender

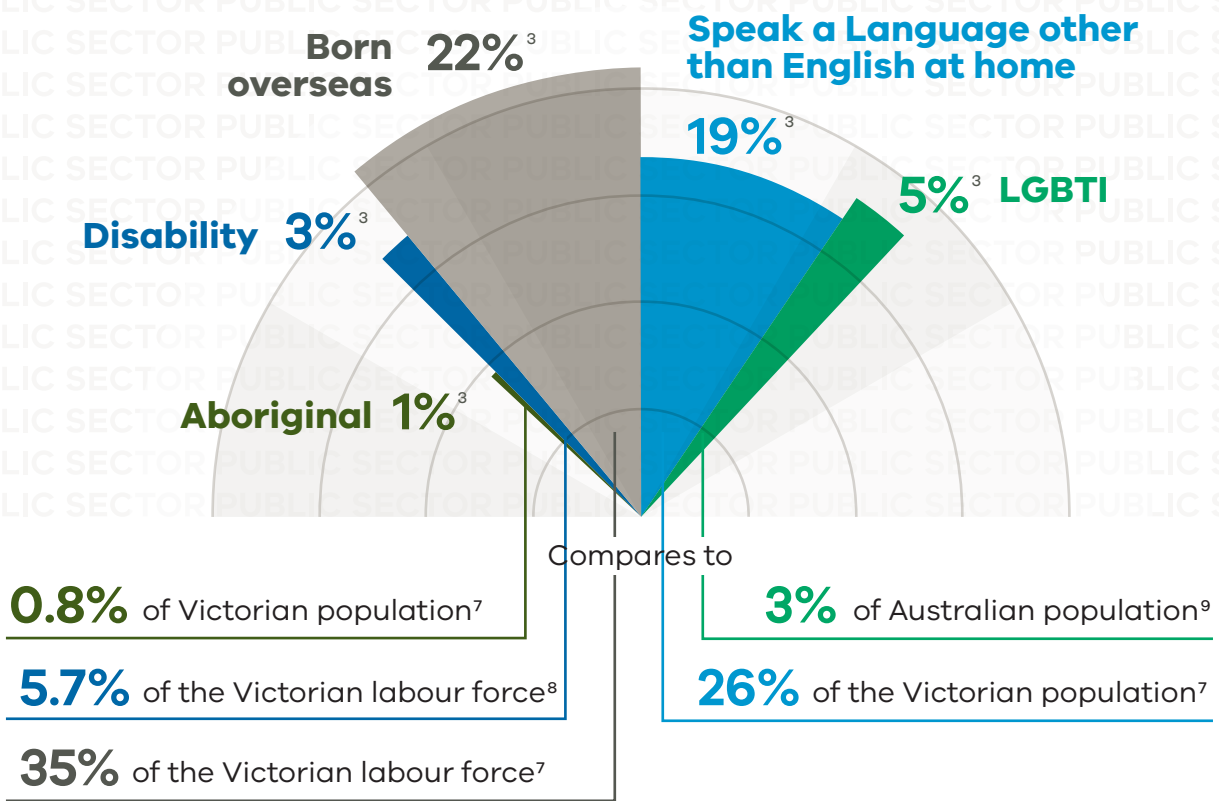


Age

Workforce age profile



Diversity



Board Governance



Profile of board members



Reference

- 1 Public entities with no employees include advisory boards, the majority of cemetery trusts, and most small Crown land committees of management
- 2 New start rate is the number of employees commencing within the year divided by the total number of active employees at June 2017 and employees who separated over the year
- 3 People Matter Survey 2017 and Workforce data collection 2017
- 4 Australian Bureau of Statistics, Employment and Work, Australia May 2017 Catalogue no. 62270 Victoria
- 5 Australian Bureau of Statistics, Labour Force, Australia, Detailed, Catalogue No. 6291.0.55.001, LM1 Nov 2017
- 6 Australian Bureau of Statistics, Labour Force, Catalogue No. 6291.0.55.001 August 2017
- 7 Australian Bureau of Statistics, 2016 Census of Population and Housing
- 8 Australian Bureau of Statistics, Disability, Aging and Carers, Australia: Victorian 2015, Catalogue no. 4430.0 People with a disability that represents an employment restriction.
- 9 Australian Bureau of Statistics, General Social Survey: Summary results, Australia 2014 Catalogue no. 4159.0
- 10 Does not include school councilors or Crown land committees of management members, representing 73% of all board members